

Demographic Summary

Bunn Town, NC
 Bunn Town, NC (3708860)
 Geography: Place

Prepared by Esri



INCOME



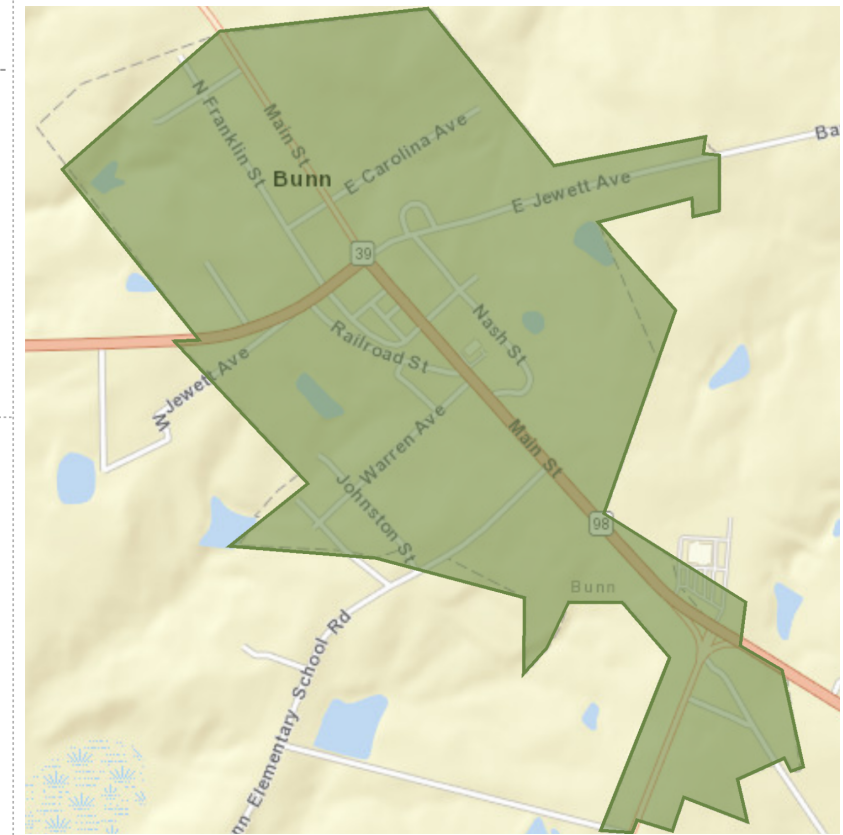
Median Household Income



Per Capita Income



Median Net Worth



KEY FACTS

368

Population



169

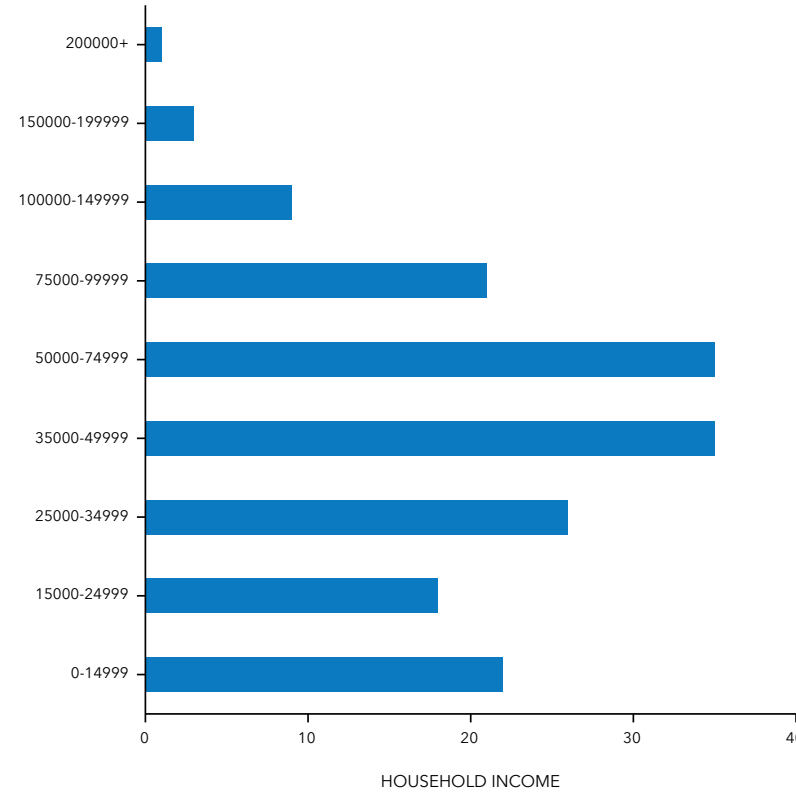
Households

38.3

Median Age

\$35,800

Median Disposable Income



EDUCATION

29%

No High School Diploma



39%

High School Graduate



24%

Some College



7%

Bachelor's/Grad/Prof Degree

EMPLOYMENT



51%

White Collar



34%

Blue Collar



17%

Services



Unemployment Rate

Demographic Summary

Butner Town, NC
 Butner Town, NC (3709360)
 Geography: Place

Prepared by Esri



INCOME



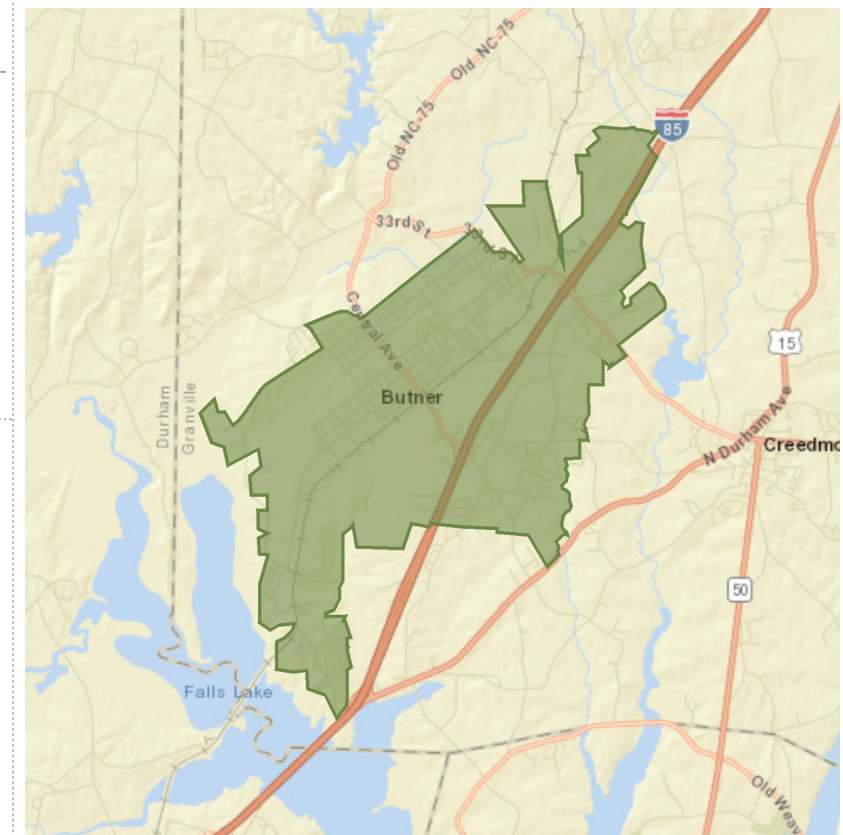
Median Household Income



Per Capita Income



Median Net Worth



KEY FACTS

7,711

Population



2,788

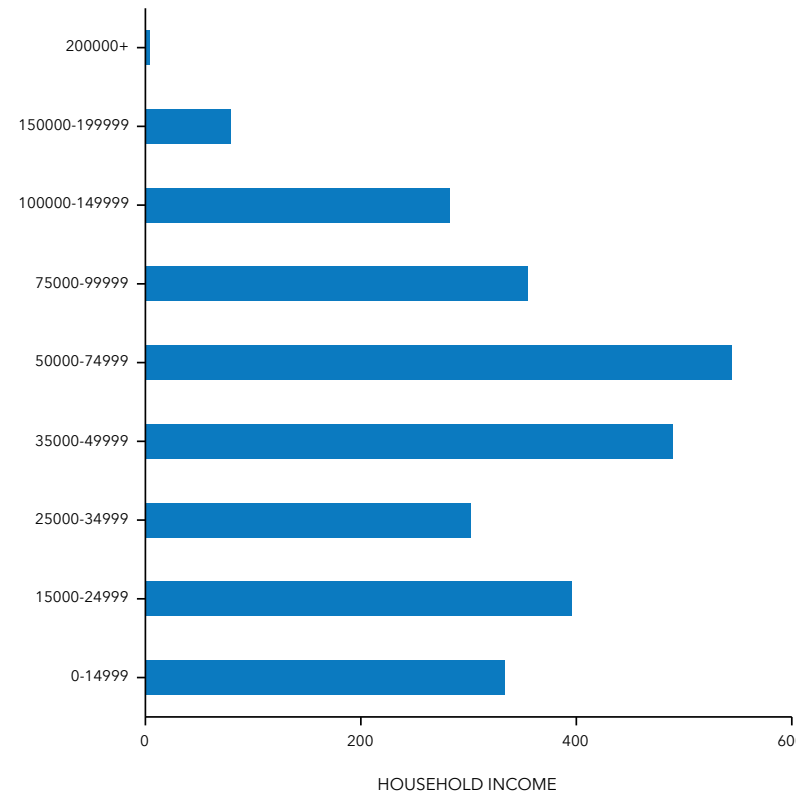
Households

39.3

Median Age

\$37,883

Median Disposable Income



EDUCATION

21%

No High School Diploma



32%

High School Graduate



31%

Some College



16%

Bachelor's/Grad/Prof Degree

EMPLOYMENT



White Collar



Blue Collar



Services

6.0%

Unemployment Rate

Demographic Summary

Creedmoor City, NC
 Creedmoor City, NC (3715320)
 Geography: Place

Prepared by Esri



INCOME



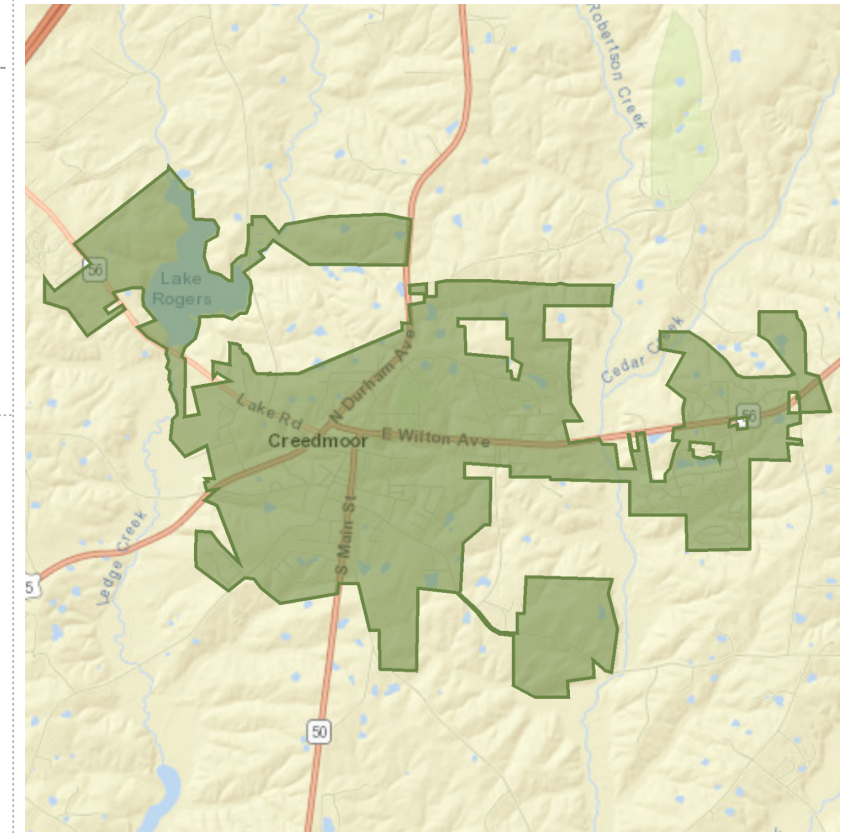
Median Household Income



Per Capita Income



Median Net Worth



KEY FACTS

4,172
Population



1,560

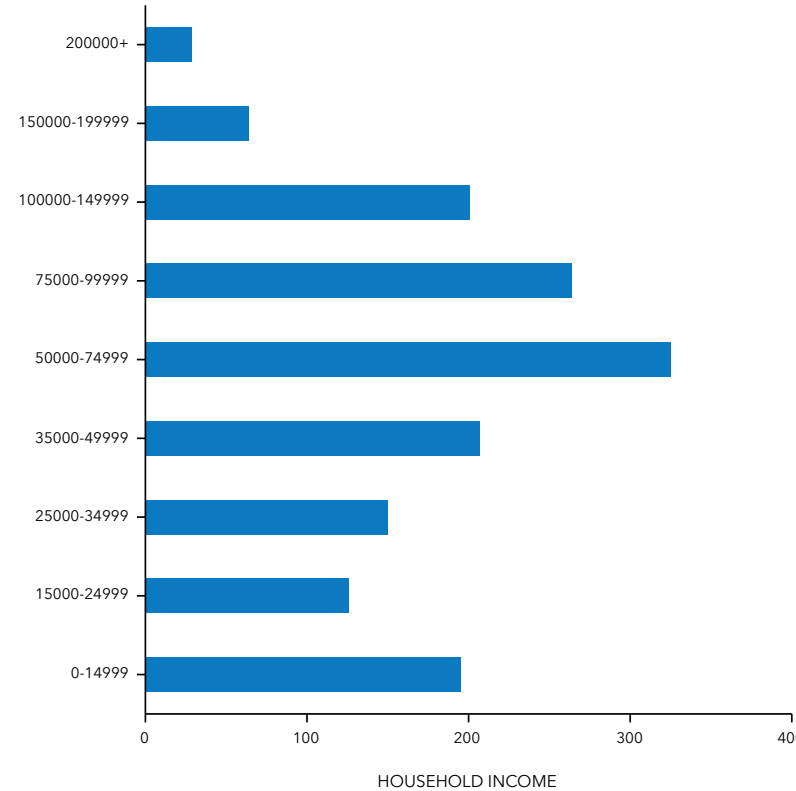
Households

40.6

Median Age

\$45,994

Median Disposable Income



EDUCATION

11%

No High School Diploma



31%

High School Graduate



35%

Some College



23%

Bachelor's/Grad/Prof Degree

EMPLOYMENT



White Collar

70%



Blue Collar

17%



Services

13%

7.1%

Unemployment Rate

Demographic Summary

Franklinton Town, NC
 Franklinton Town, NC (3724720)
 Geography: Place

Prepared by Esri



INCOME



\$35,704

Median Household Income



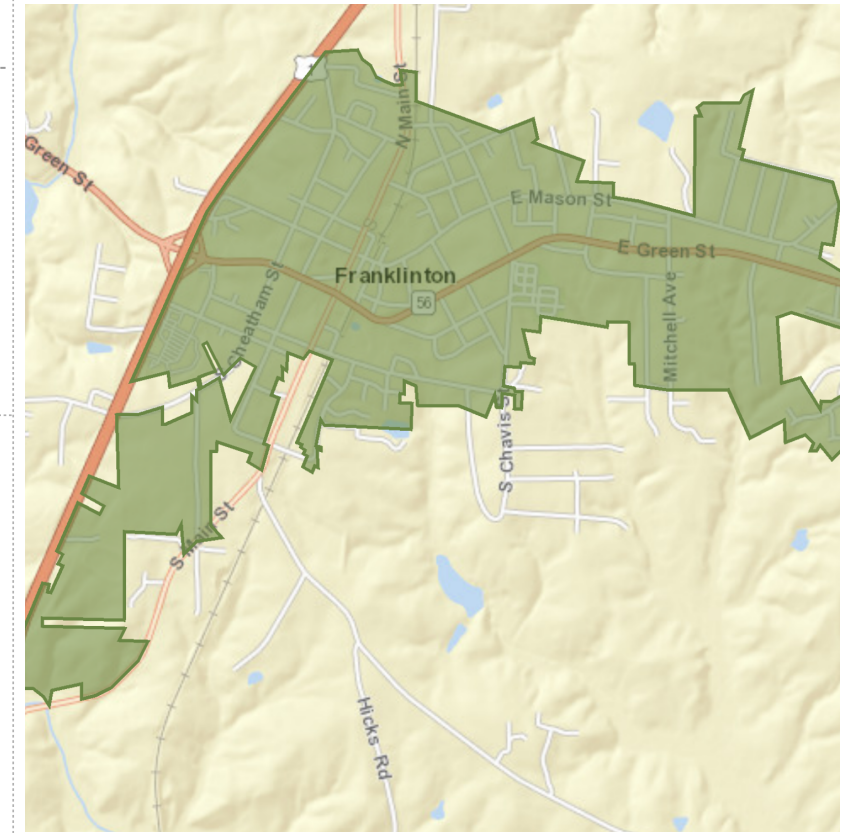
\$19,336

Per Capita Income



\$49,610

Median Net Worth



KEY FACTS

2,049

Population



880

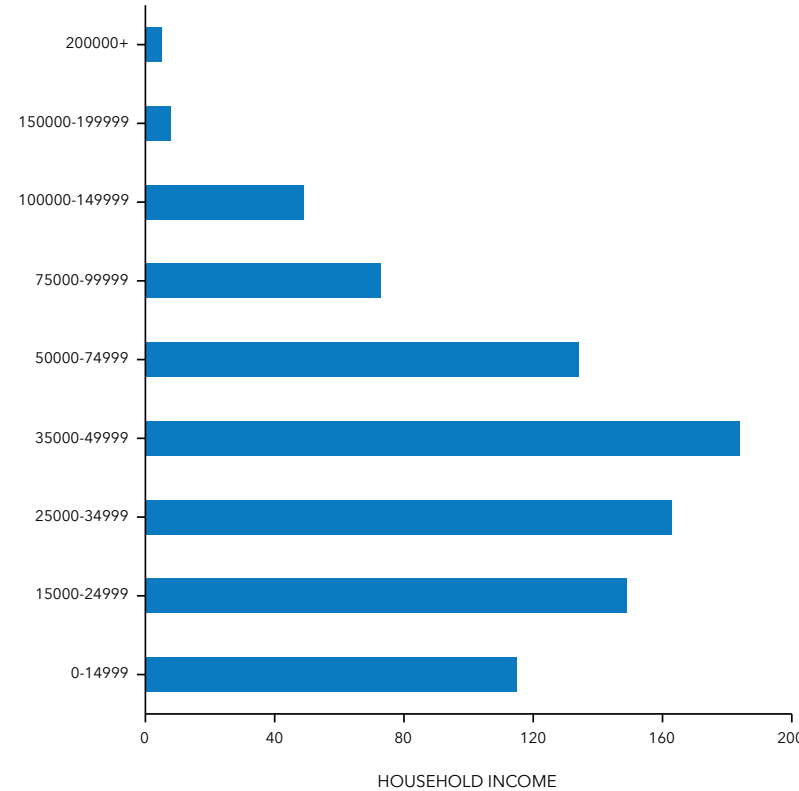
Households

43.4

Median Age

\$30,196

Median Disposable Income



EDUCATION

27%

No High School Diploma



30%

High School Graduate



28%

Some College



15%

Bachelor's/Grad/Prof Degree

EMPLOYMENT



White Collar

65%



Blue Collar

27%



Services

8%

8.2%

Unemployment Rate

Demographic Summary

Henderson City, NC
 Henderson City, NC (3730660)
 Geography: Place

Prepared by Esri



INCOME



Median Household Income



Per Capita Income



Median Net Worth

KEY FACTS

14,793
Population



5,953

Households

40.6

Median Age

\$22,601

Median Disposable Income

EDUCATION

27%

No High School Diploma



35%

High School Graduate



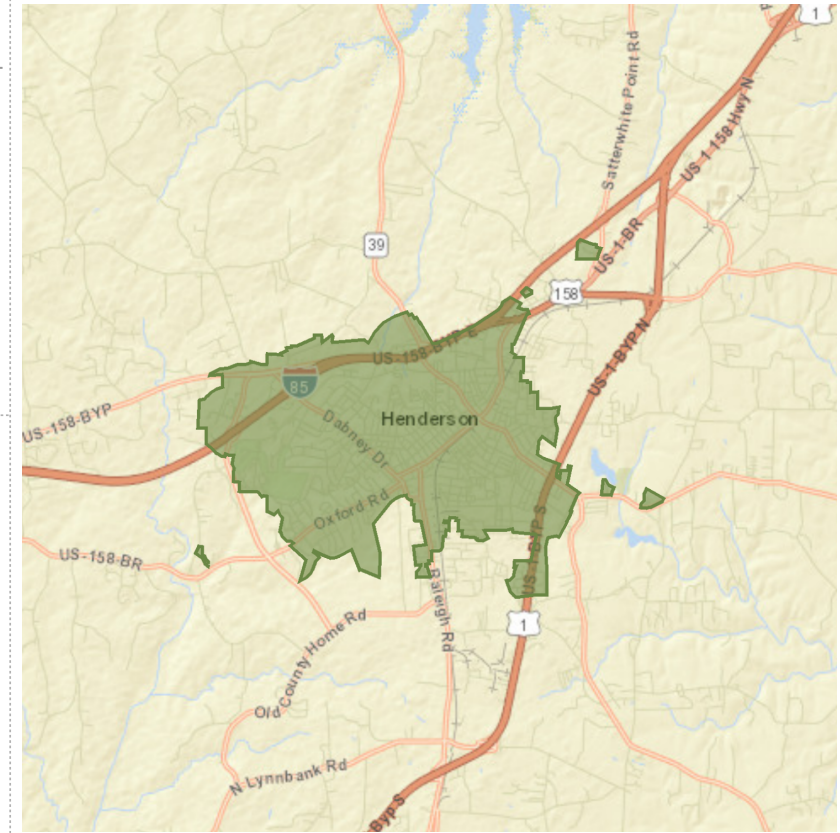
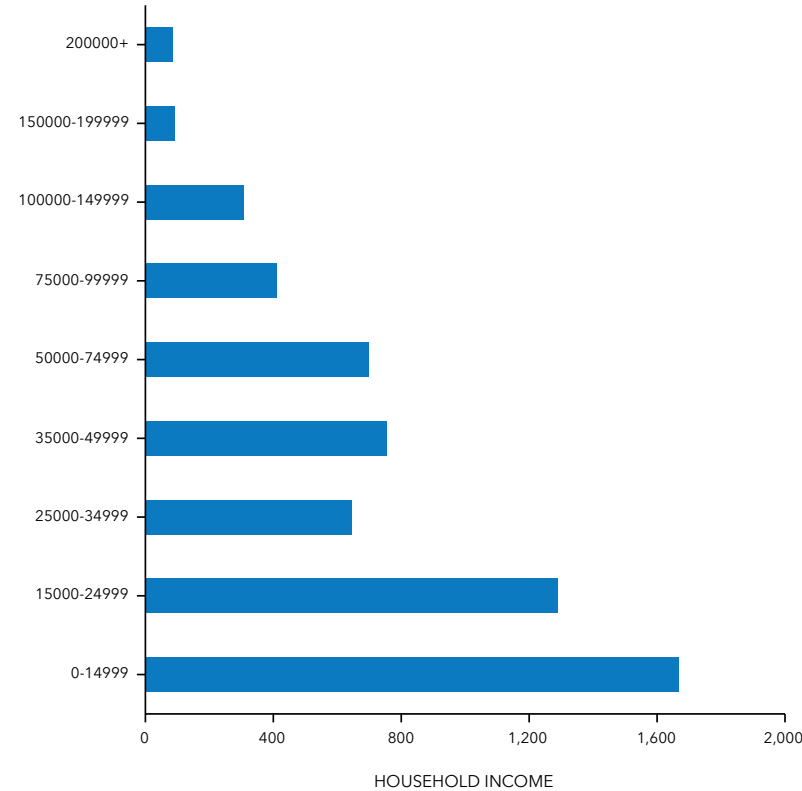
24%

Some College



14%

Bachelor's/Grad/Prof Degree



EMPLOYMENT



White Collar



Blue Collar



Services

10.0%

Unemployment Rate

Demographic Summary

Kittrell Town, NC
 Kittrell Town, NC (3736020)
 Geography: Place

Prepared by Esri



INCOME



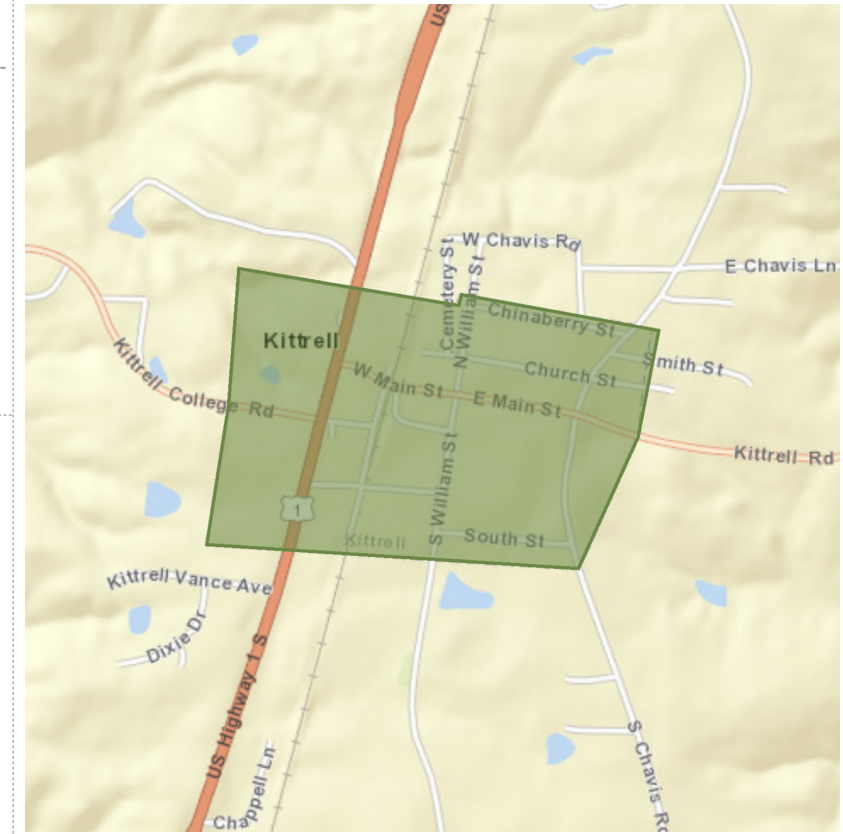
Median Household Income



Per Capita Income



Median Net Worth



KEY FACTS

462

Population



71

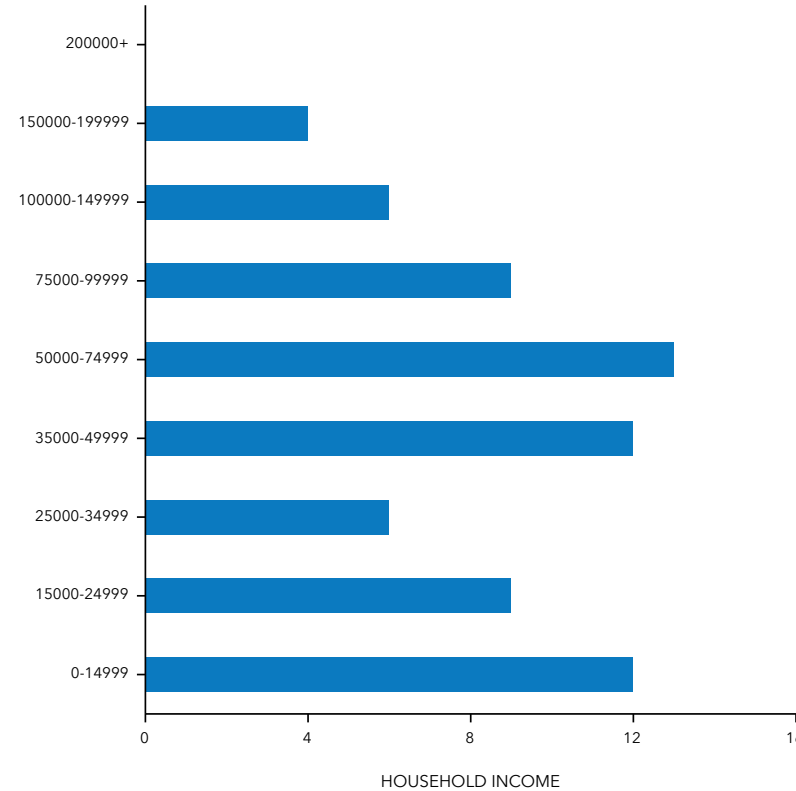
Households

36.7

Median Age

\$37,077

Median Disposable Income



EDUCATION

16%

No High School Diploma



47%

High School Graduate



33%

Some College



4%

Bachelor's/Grad/Prof Degree

EMPLOYMENT



58%

White Collar



29%

Blue Collar



13%

Services

4.6%

Unemployment Rate

Demographic Summary

Louisburg Town, NC
 Louisburg Town, NC (3739360)
 Geography: Place

Prepared by Esri



KEY FACTS

3,443

Population



1,226

Households

39.6

Median Age

\$32,962

Median Disposable Income

EDUCATION

17%

No High School Diploma



30%

High School Graduate



32%

Some College



21%

Bachelor's/Grad/Prof Degree

INCOME



\$38,428

Median Household Income



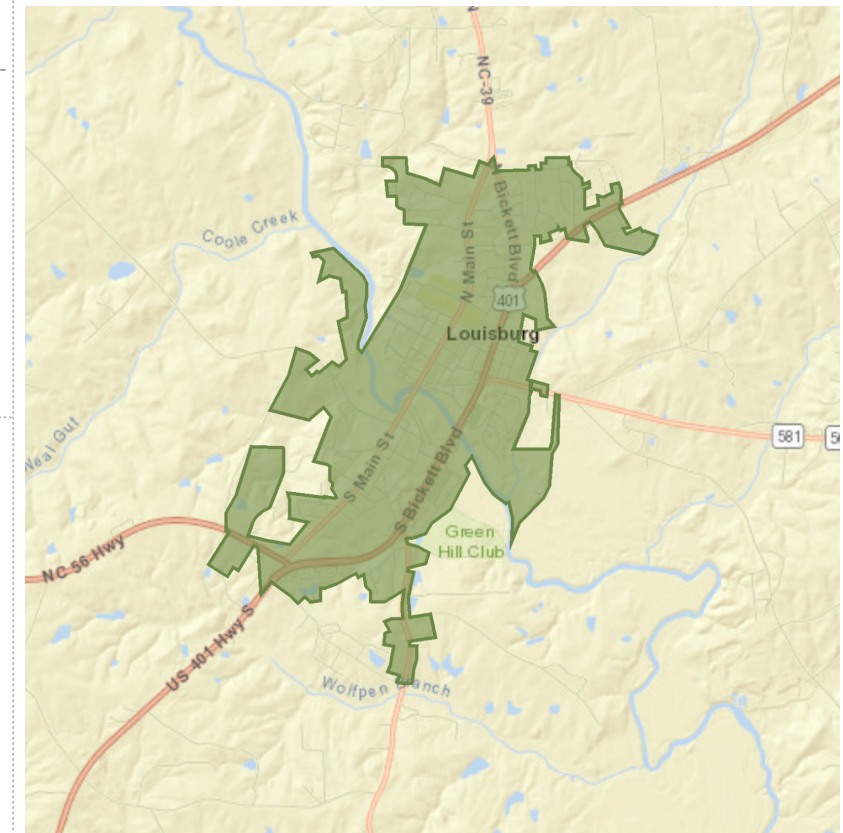
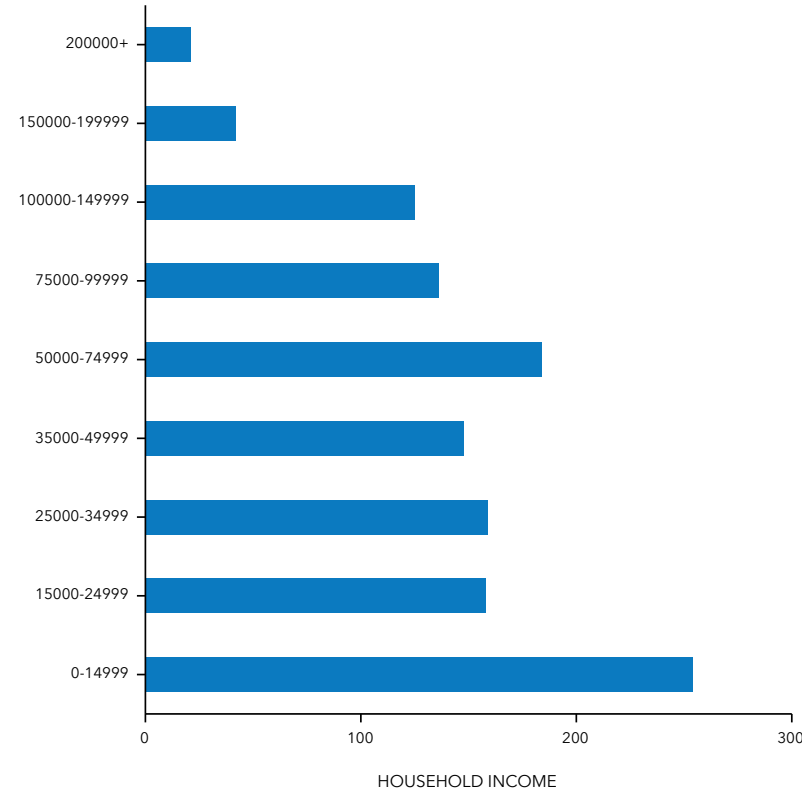
\$24,422

Per Capita Income



\$27,276

Median Net Worth



EMPLOYMENT



White Collar

56%



Blue Collar

28%



Services

17%

13.8%

Unemployment Rate

Demographic Summary

Macon Town, NC
 Macon Town, NC (3740540)
 Geography: Place

Prepared by Esri



★Designed by TownMapsUSA.com

INCOME



\$46,407

Median Household Income



\$26,013

Per Capita Income



\$154,877

Median Net Worth

KEY FACTS

126

Population



55

Households

58.3

Median Age

\$37,479

Median Disposable Income

EDUCATION

10%

No High School Diploma



34%

High School Graduate



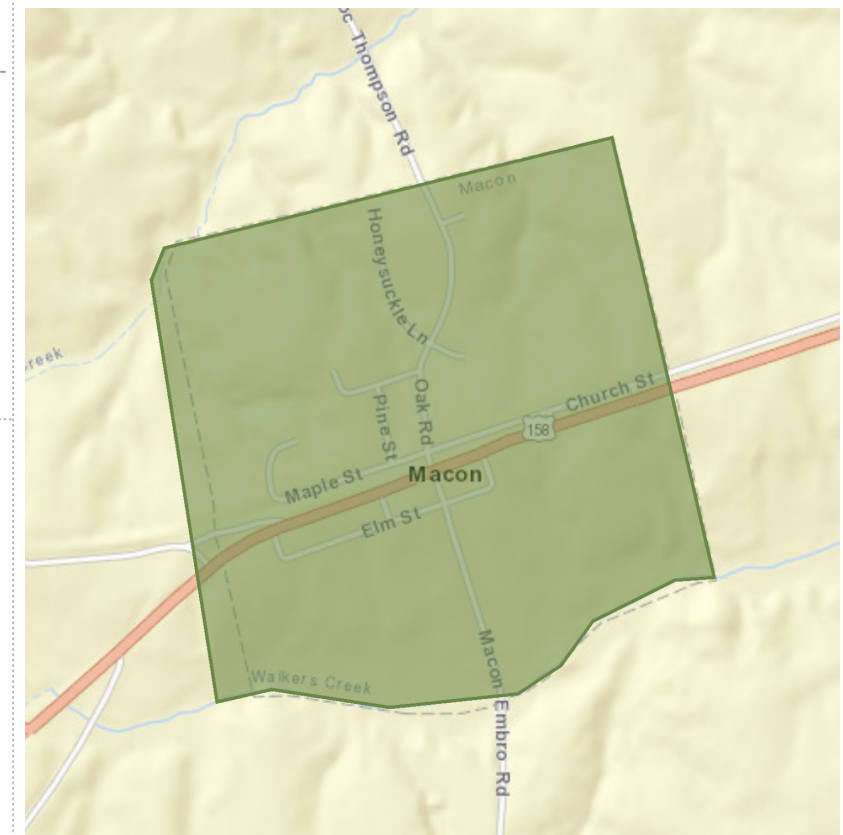
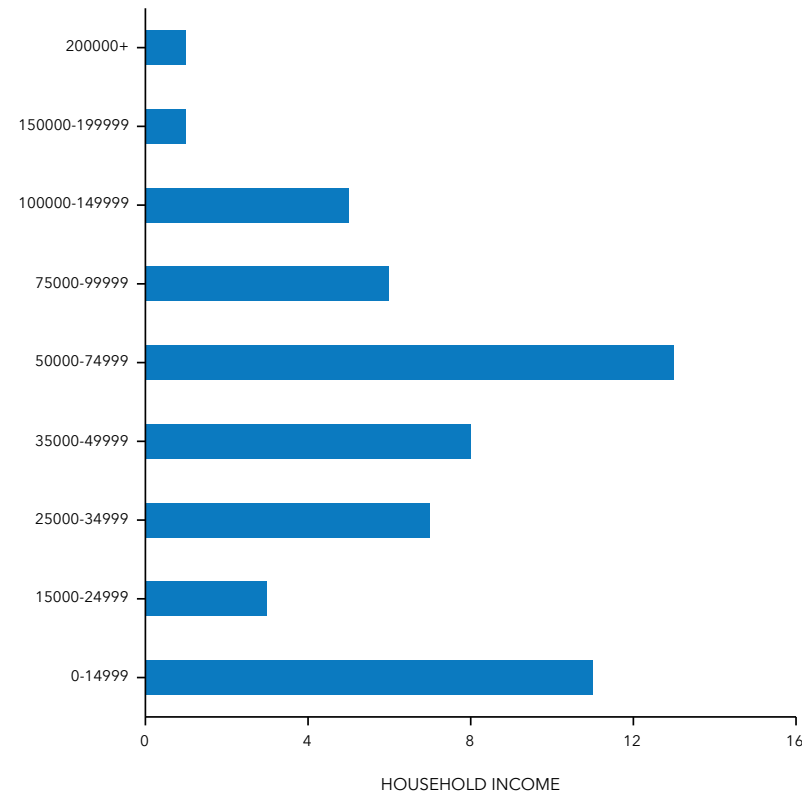
29%

Some College



28%

Bachelor's/Grad/Prof Degree



EMPLOYMENT



White Collar

53%



Blue Collar

35%



Services

9%

6.5%

Unemployment Rate

Demographic Summary

Middleburg Town, NC
 Middleburg Town, NC (3742640)
 Geography: Place

Prepared by Esri



INCOME



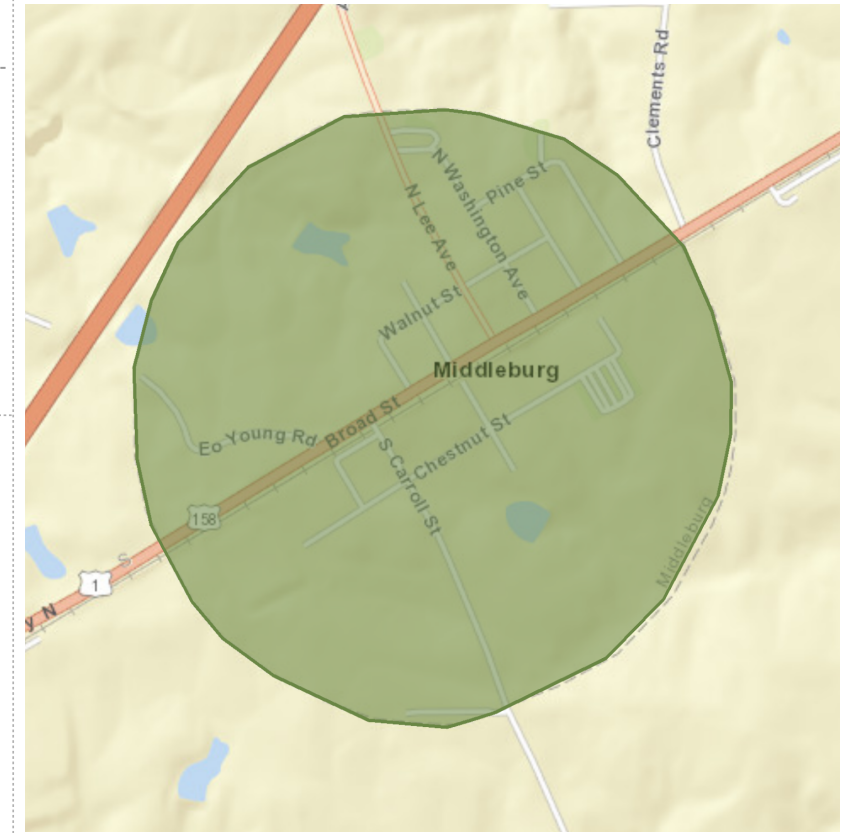
Median Household Income



Per Capita Income



Median Net Worth



KEY FACTS

142

Population



57

Households

41.6

Median Age

\$23,575

Median Disposable Income

EDUCATION

19%

No High School Diploma



39%

High School Graduate



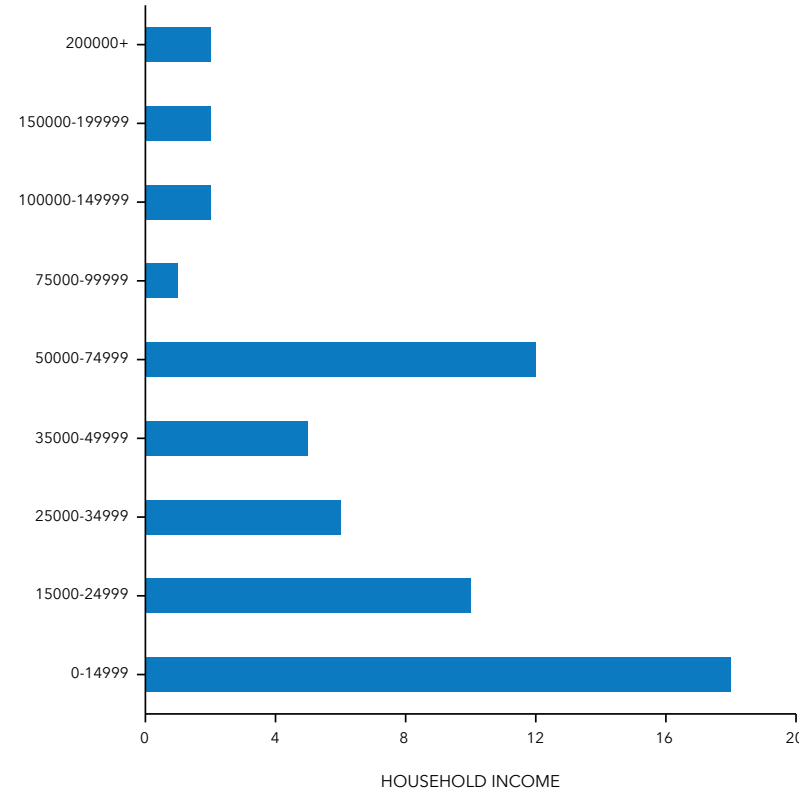
25%

Some College



18%

Bachelor's/Grad/Prof Degree



EMPLOYMENT



White Collar

57%



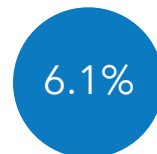
Blue Collar

26%



Services

14%



Unemployment Rate

Demographic Summary

Norlina Town, NC
 Norlina Town, NC (3747240)
 Geography: Place

Prepared by Esri



INCOME



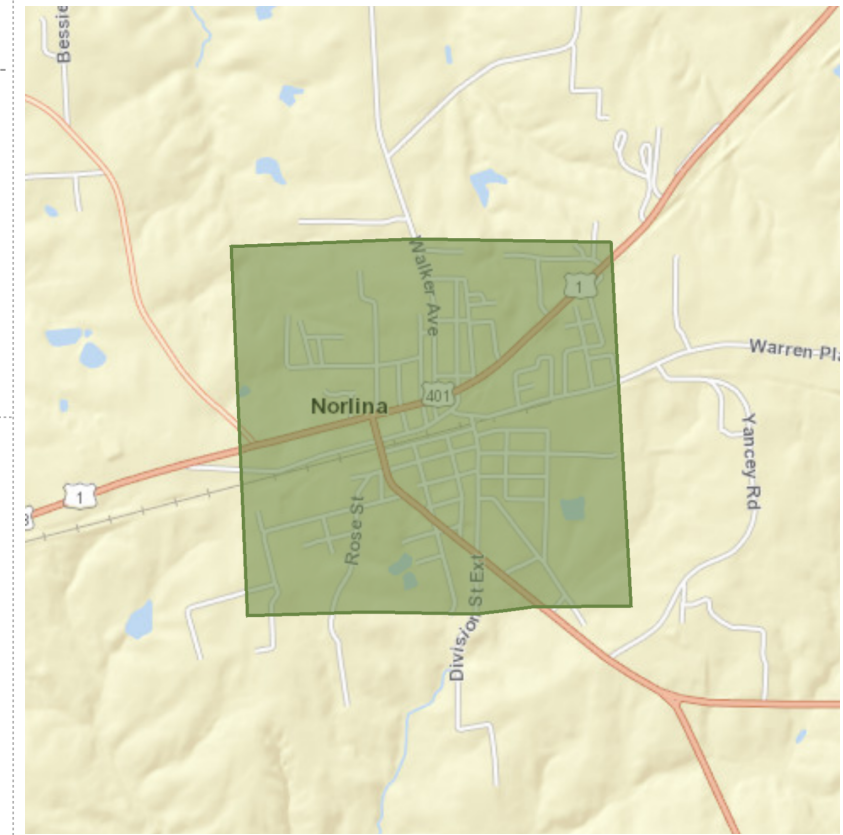
Median Household Income



Per Capita Income



Median Net Worth



KEY FACTS

1,045
Population



441

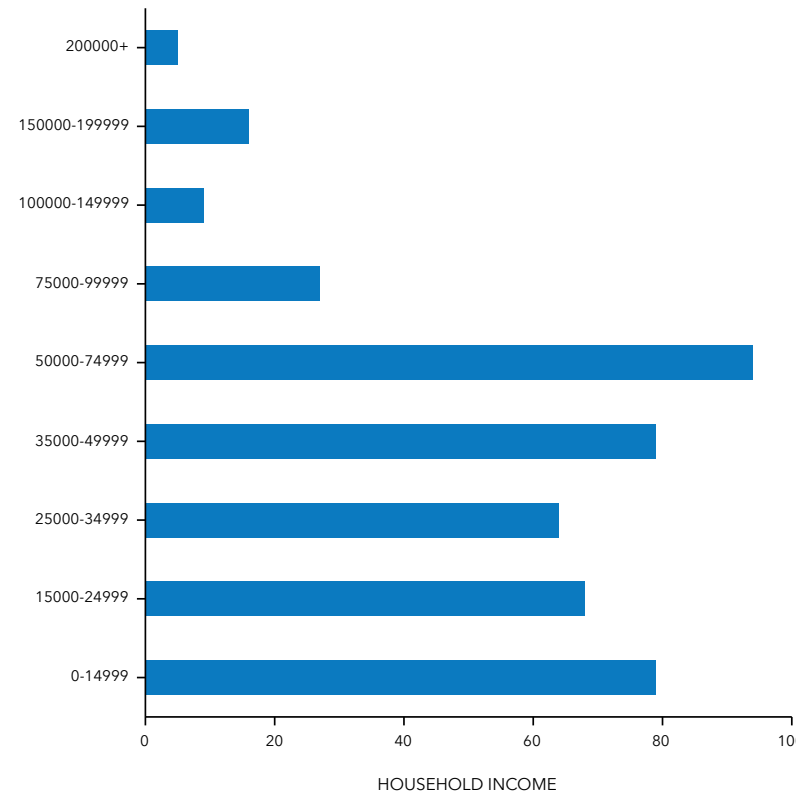
Households

41.1

Median Age

\$30,605

Median Disposable Income



EDUCATION

18%

No High School Diploma



36%

High School Graduate



22%

Some College



24%

Bachelor's/Grad/Prof Degree

EMPLOYMENT



51%

White Collar



19%

Blue Collar



29%

Services

3.8%

Unemployment Rate

Demographic Summary

Oxford City, NC
 Oxford City, NC (3749800)
 Geography: Place

Prepared by Esri



INCOME



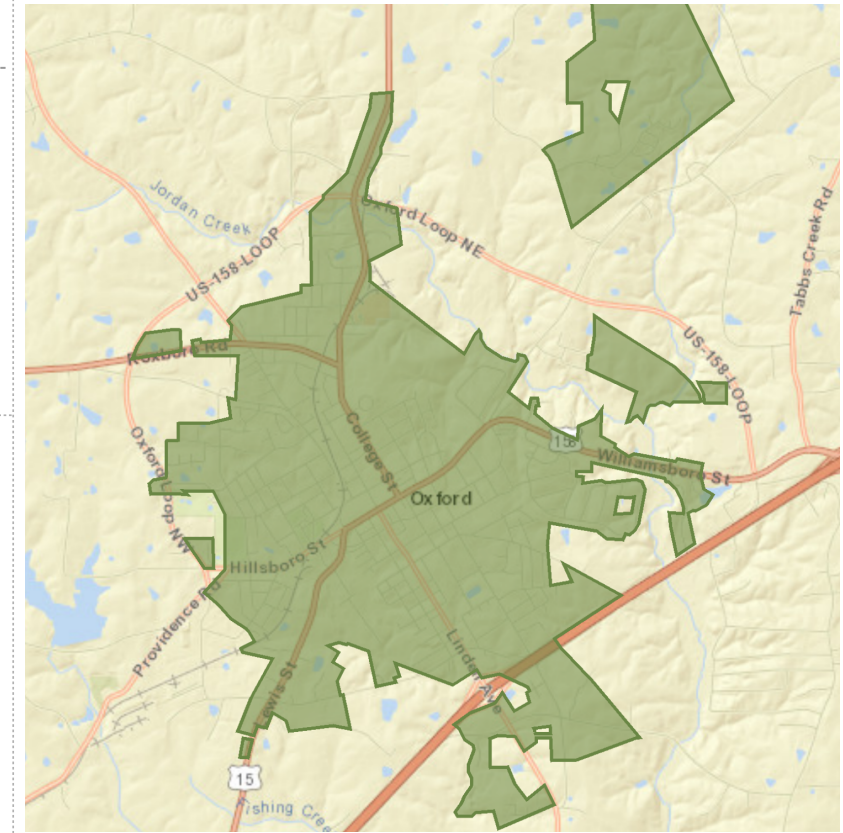
Median Household Income



Per Capita Income



Median Net Worth



KEY FACTS

8,301

Population

43.0

Median Age

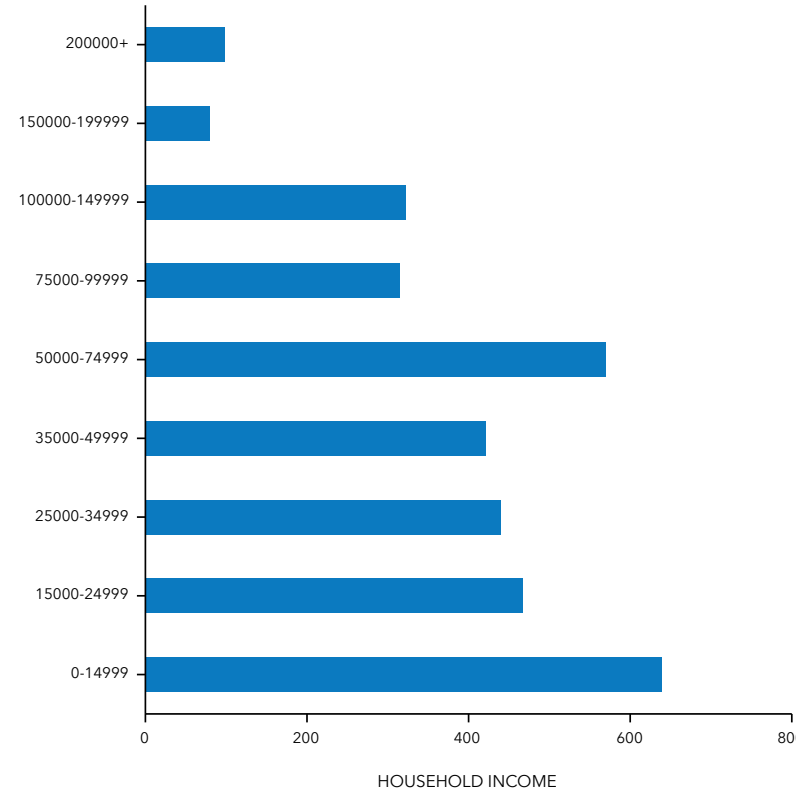


3,352

Households

\$33,230

Median Disposable Income



EDUCATION

23%

No High School Diploma



27%

High School Graduate



31%

Some College



19%

Bachelor's/Grad/Prof Degree

EMPLOYMENT



White Collar

64%



Blue Collar

24%



Services

12%

10.0%

Unemployment Rate

Demographic Summary

Roxboro City, NC
 Roxboro City, NC (3758160)
 Geography: Place

Prepared by Esri



INCOME



Median Household Income



Per Capita Income



Median Net Worth

KEY FACTS

8,433

Population



3,481

Households

42.7

Median Age

\$29,014

Median Disposable Income

EDUCATION

25%

No High School Diploma



37%

High School Graduate



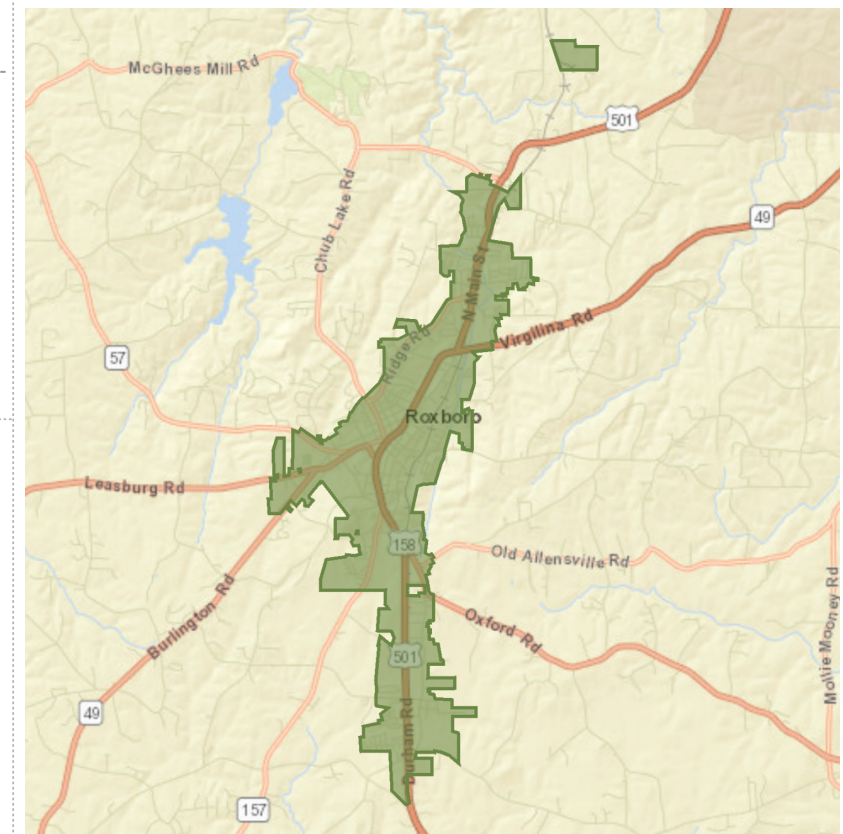
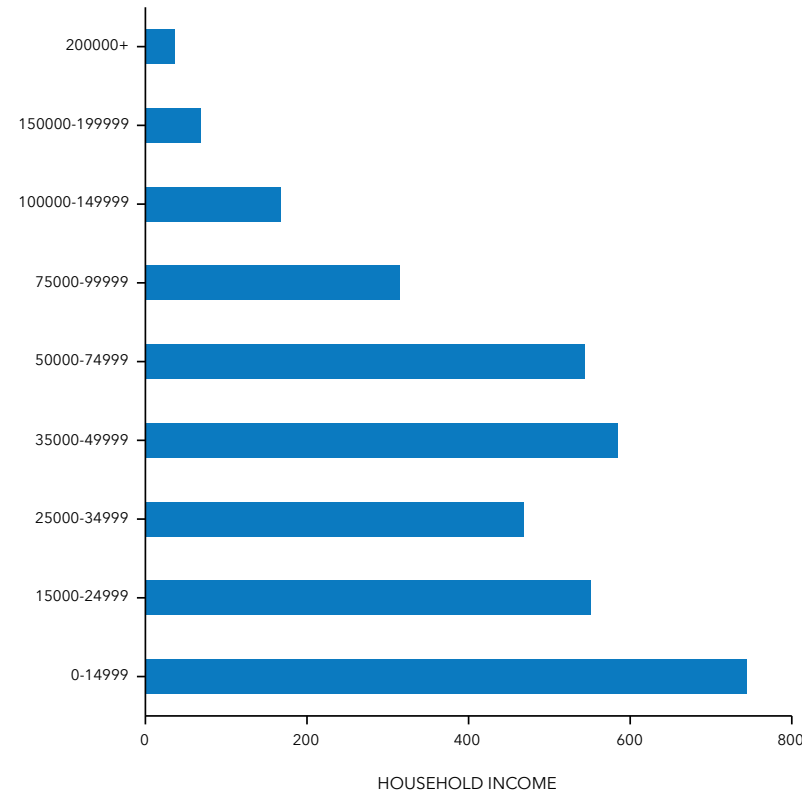
28%

Some College



11%

Bachelor's/Grad/Prof Degree



EMPLOYMENT



53%

White Collar



34%

Blue Collar



13%

Services

11.1%

Unemployment Rate

Demographic Summary

Stem Town, NC
 Stem Town, NC (3764940)
 Geography: Place

Prepared by Esri

Town of Stem North Carolina

INCOME



\$54,371

Median Household Income



\$24,434

Per Capita Income



\$128,931

Median Net Worth

KEY FACTS

693

Population



285

Households

42.2

Median Age

\$44,447

Median Disposable Income

EDUCATION

13%

No High School Diploma



39%

High School Graduate



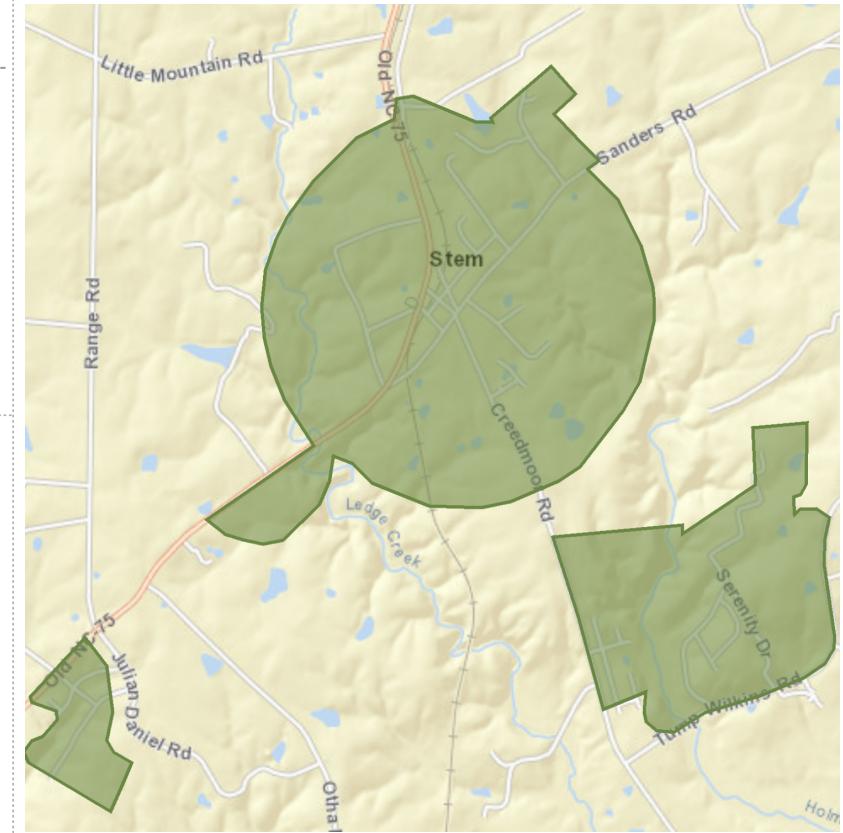
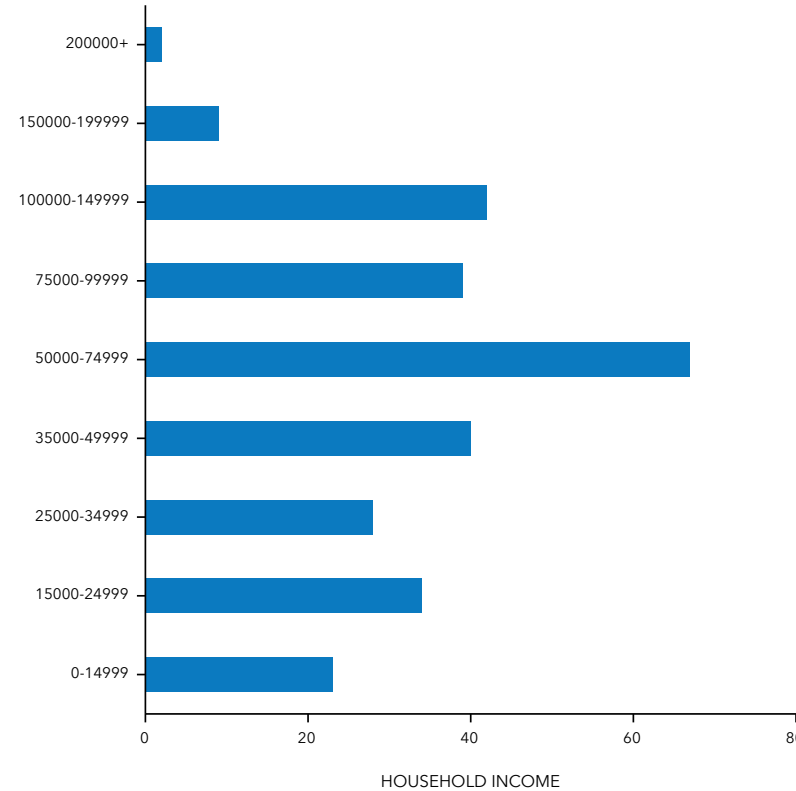
34%

Some College



14%

Bachelor's/Grad/Prof Degree



EMPLOYMENT



White Collar

56%



Blue Collar

34%



Services

10%

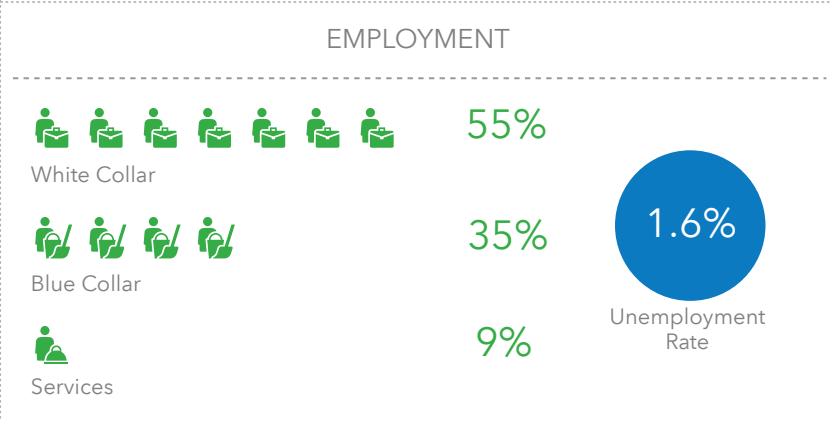
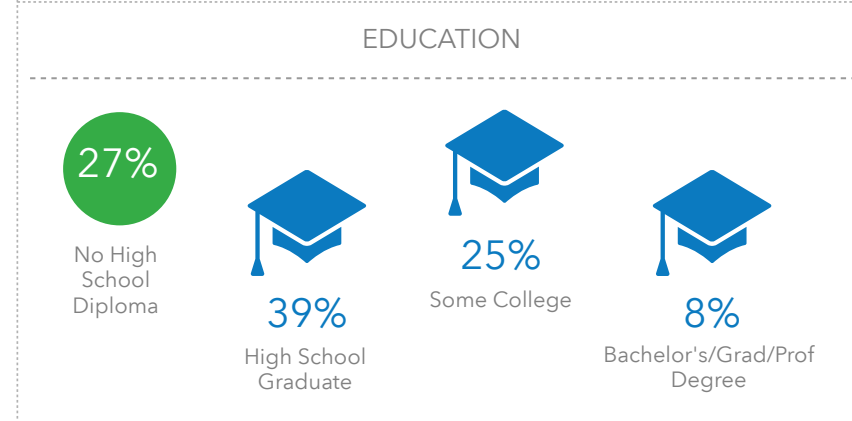
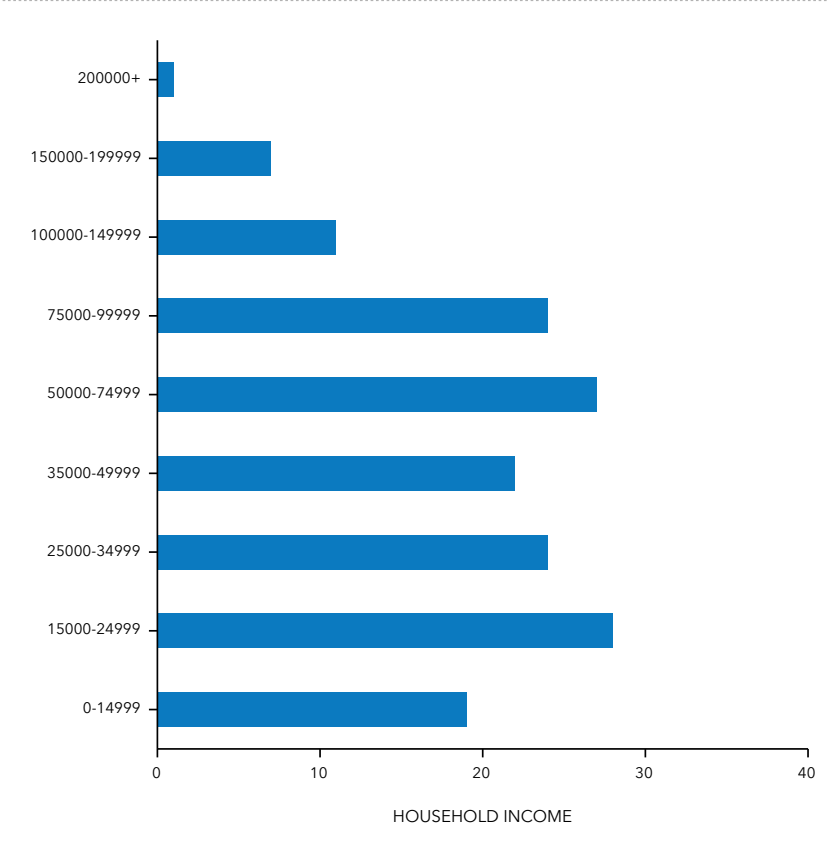
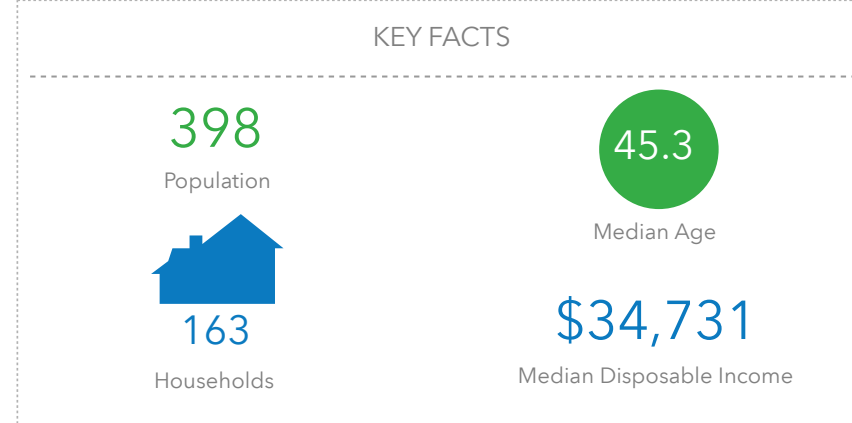
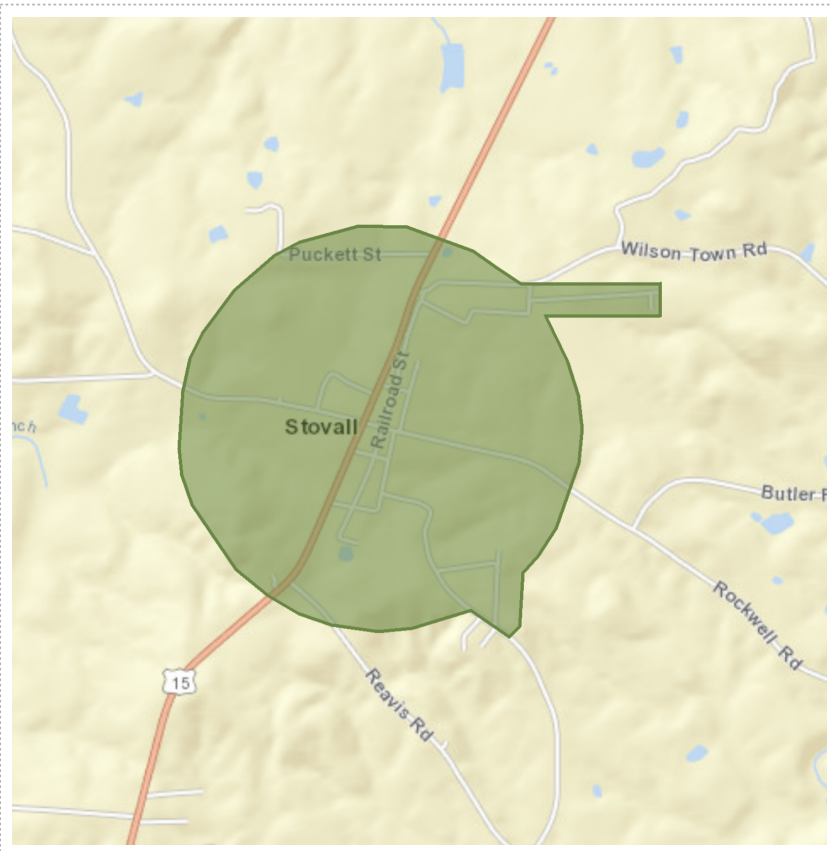
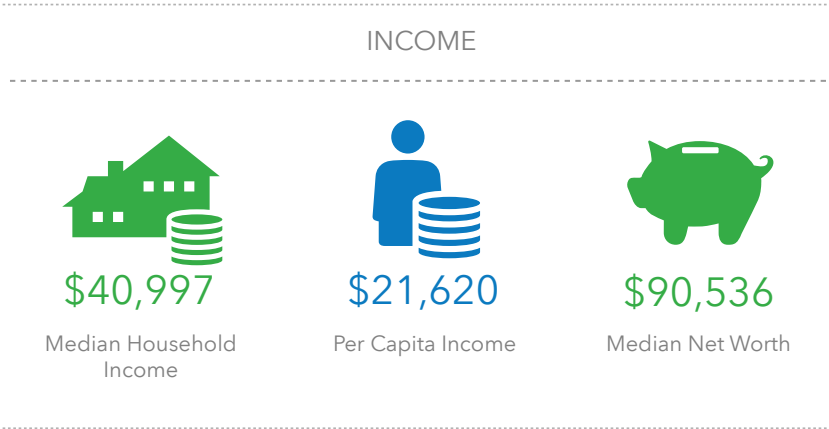
3.7%

Unemployment Rate

Demographic Summary

Stovall Town, NC
 Stovall Town, NC (3765320)
 Geography: Place

Prepared by Esri



Demographic Summary

Warrenton Town, NC
 Warrenton Town, NC (3771100)
 Geography: Place

Prepared by Esri



INCOME



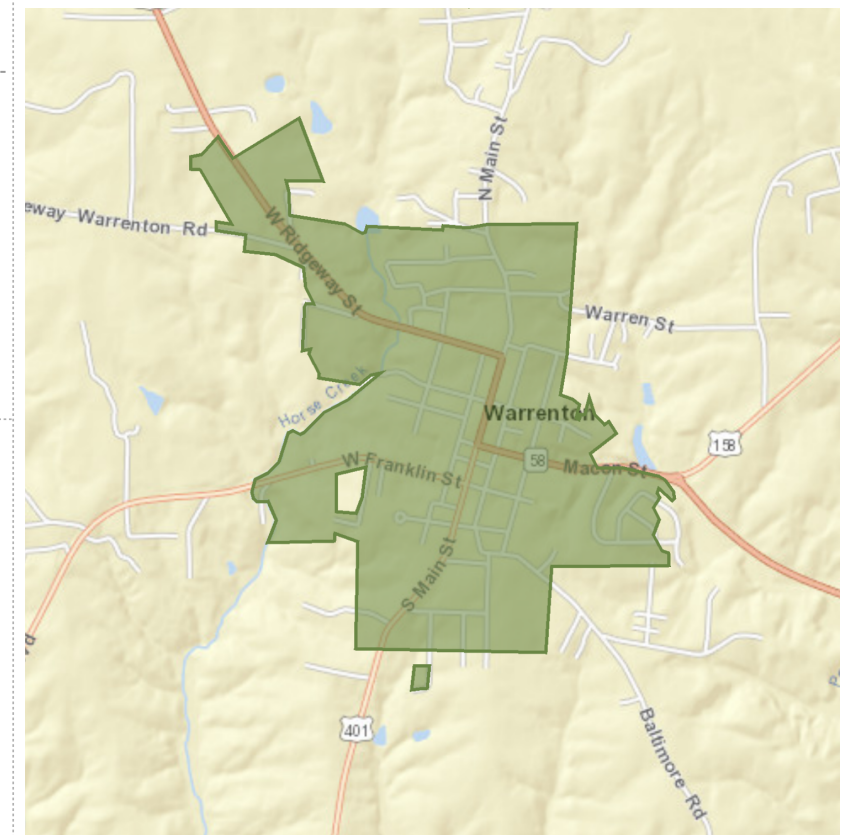
Median Household Income



Per Capita Income



Median Net Worth



KEY FACTS

823

Population



419

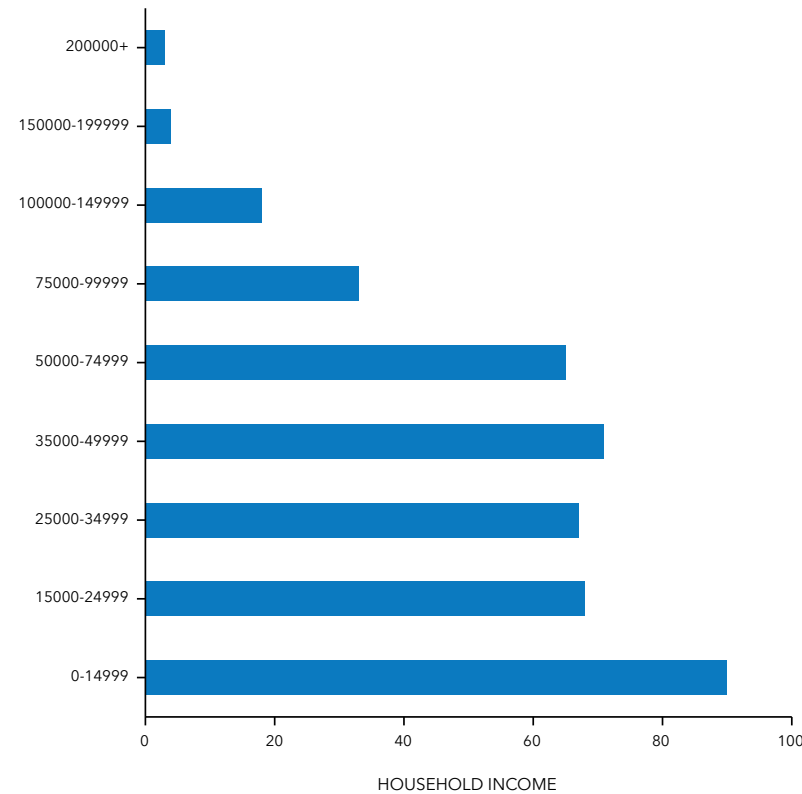
Households

47.0

Median Age

\$27,676

Median Disposable Income



EDUCATION

27%

No High School Diploma



34%

High School Graduate



27%

Some College



13%

Bachelor's/Grad/Prof Degree

EMPLOYMENT



White Collar



Blue Collar



Services

5.5%

Unemployment Rate

Demographic Summary

Youngsville Town, NC
 Youngsville Town, NC (3776200)
 Geography: Place

Prepared by Esri



NC

★ Designed by TownMapsUSA.com

INCOME



\$54,152

Median Household Income



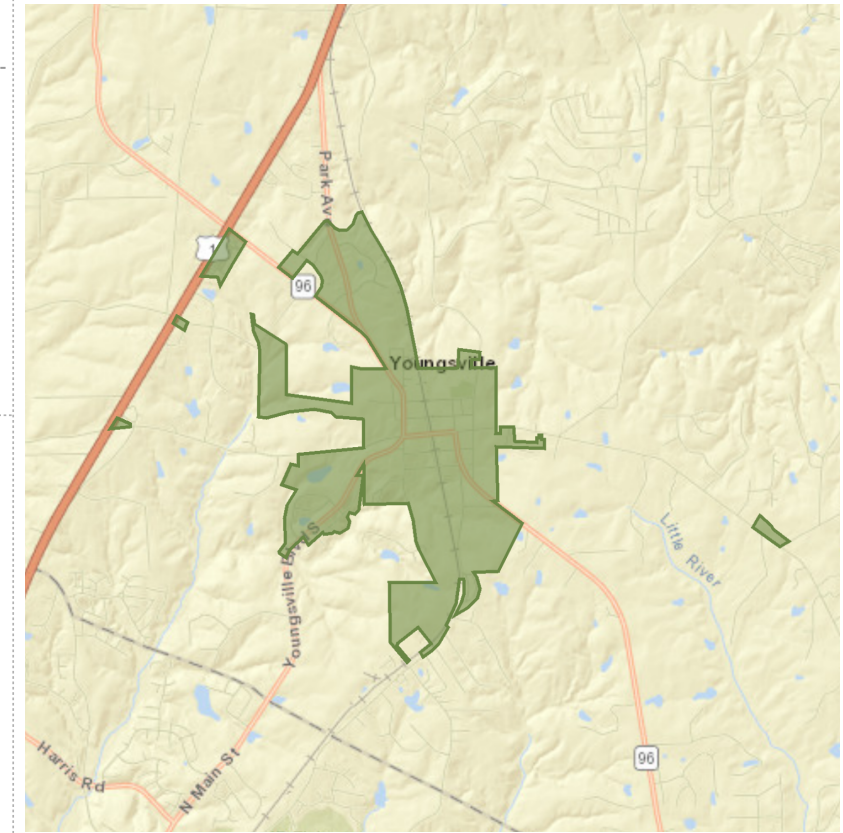
\$25,904

Per Capita Income



\$97,437

Median Net Worth



KEY FACTS

1,249

Population



555

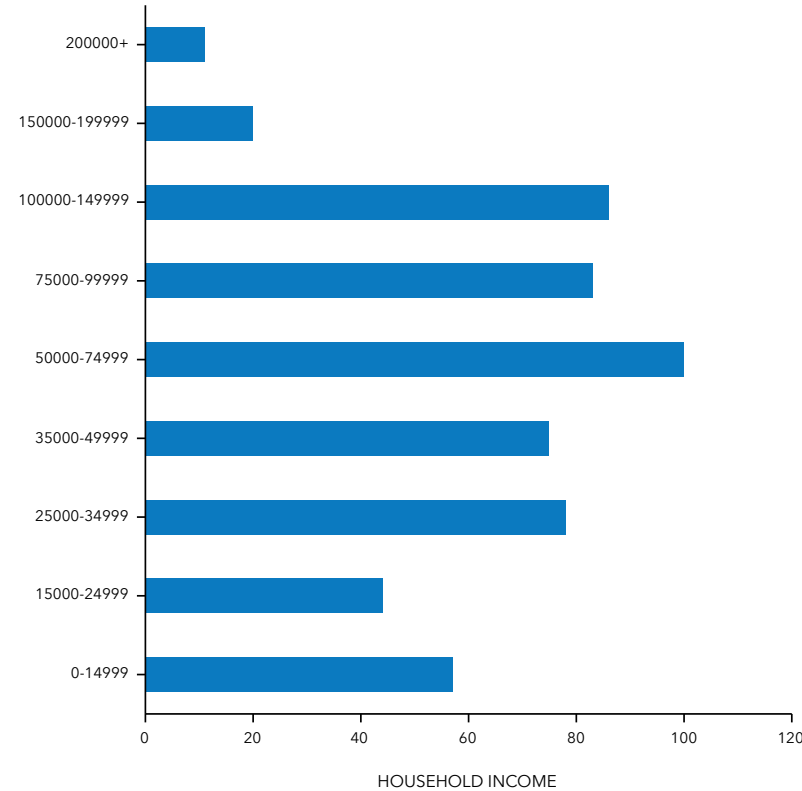
Households

39.1

Median Age

\$44,487

Median Disposable Income



EDUCATION

10%

No High School Diploma



23%

High School Graduate



40%

Some College



27%

Bachelor's/Grad/Prof Degree

EMPLOYMENT



White Collar

61%



Blue Collar

24%



Services

14%

2.6%

Unemployment Rate